

PGP Encryption for Windows

Ankit Agarwal

Department of Electrical Engineering & Computer Science
GPG4Win software presentation



ankit@ku.edu

PGP Encryption for Windows

Outline

- Introduction to GPG
- GPG4Win software
- Installation and Configuration of GPG4Win
- Using GPG4Win
- References

PGP Encryption for Windows

Outline

- Introduction to GPG
- GPG4Win software
- Installation and Configuration of GPG4Win
- Using GPG4Win
- References

PGP Encryption for Windows

Introduction

- What is GPG?
 - GPG stands for GNU Privacy Guard
 - Free implementation of the OpenPGP standard as defined by RFC4880
 - Allows you to encrypt and sign data and communication
- Website:
<http://www.gnupg.org/>

PGP Encryption for Windows

Outline

- Introduction to GPG
- **GPG4Win software**
- Installation and Configuration of GPG4Win
- Using GPG4Win
- References

PGP Encryption for Windows

GPG4Win software

- Software implementation of GPG for Windows
- Both cryptography standards are supported, OpenPGP and S/MIME
- Website:
<http://www.gpg4win.org/>

PGP Encryption for Windows

GPG4Win software

| | |
|---------------------------|---|
| GnuPG: | The core; this is the actual encryption tool |
| WinPT: | A key manager and helper for various encryption matters |
| GPA: | Another key manager, tastes are simply different |
| GPGol: | A plugin for Microsoft Outlook 2003 (email encryption) |
| GPGeek: | A plugin for Microsoft Explorer (file encryption) |
| Claws Mail: | A complete email program including the plugin for GnuPG |
| Documentation: | |
| Gpg4win for Novices: | A handbook specifically for newbies |
| Gpg4win für Durchblicker: | A (German!) handbook about some background, for beginners |

From [2]

PGP Encryption for Windows

Outline

- Introduction to GPG
- GPG4Win software
- **Installation and Configuration of GPG4Win**
- Using GPG4Win
- References

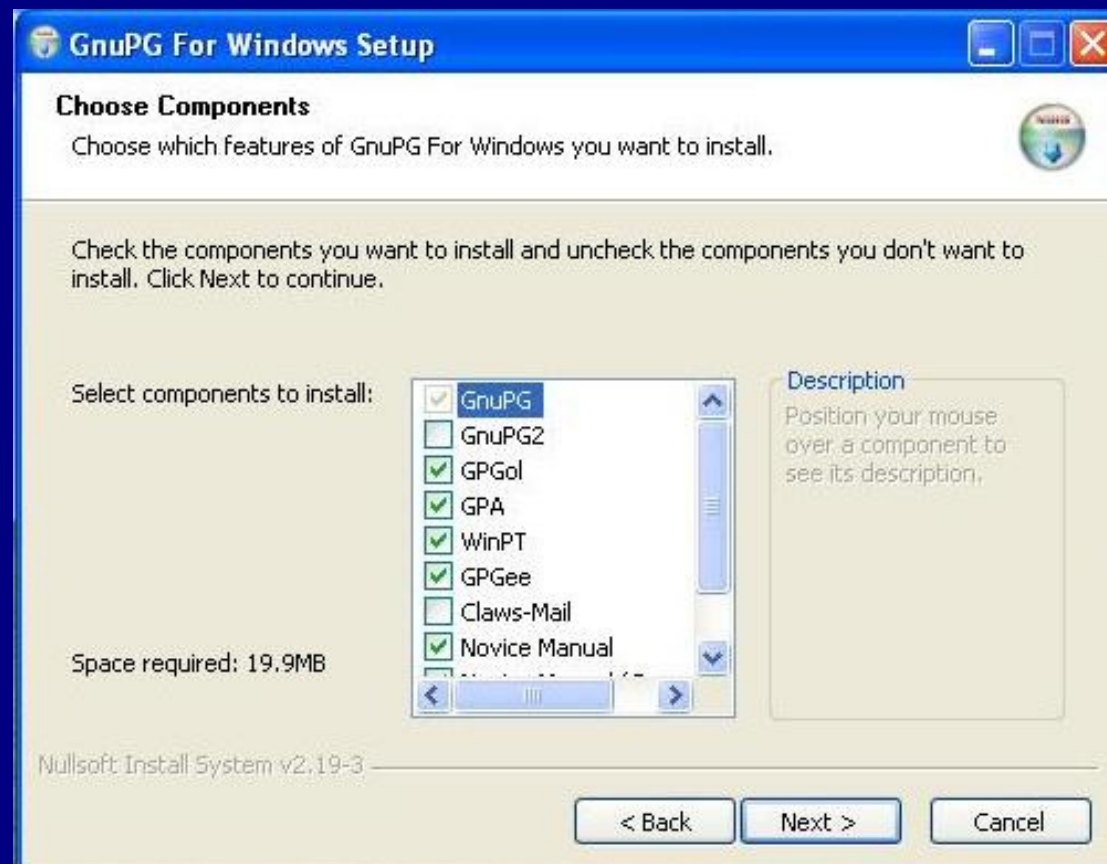
PGP Encryption for Windows

Installation of GPG4Win



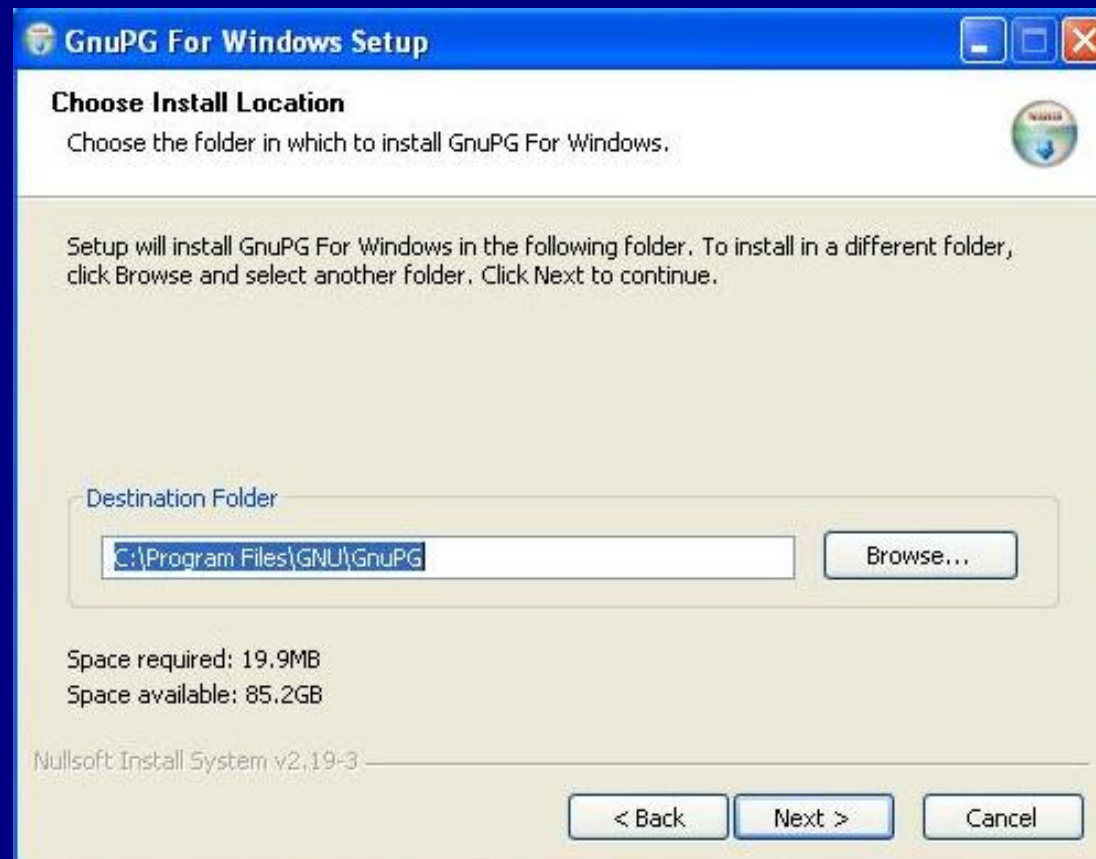
PGP Encryption for Windows

Installation of GPG4Win



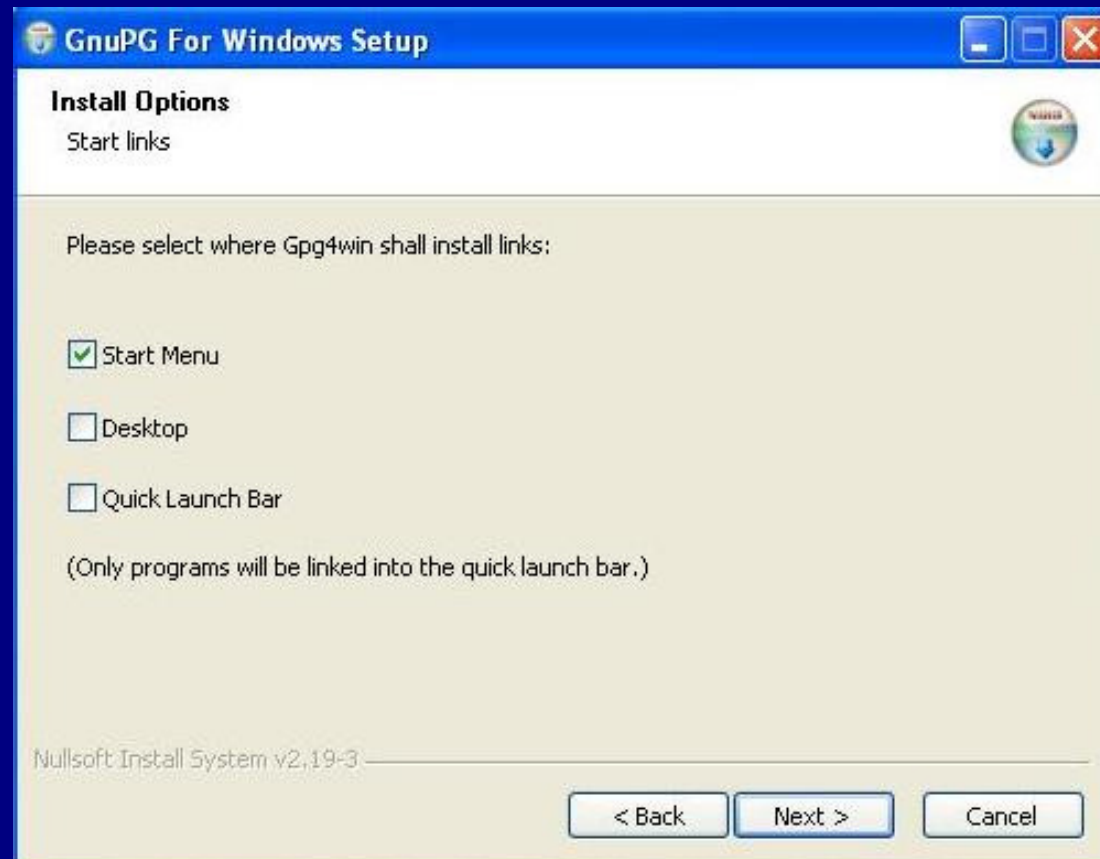
PGP Encryption for Windows

Installation of GPG4Win



PGP Encryption for Windows

Installation of GPG4Win



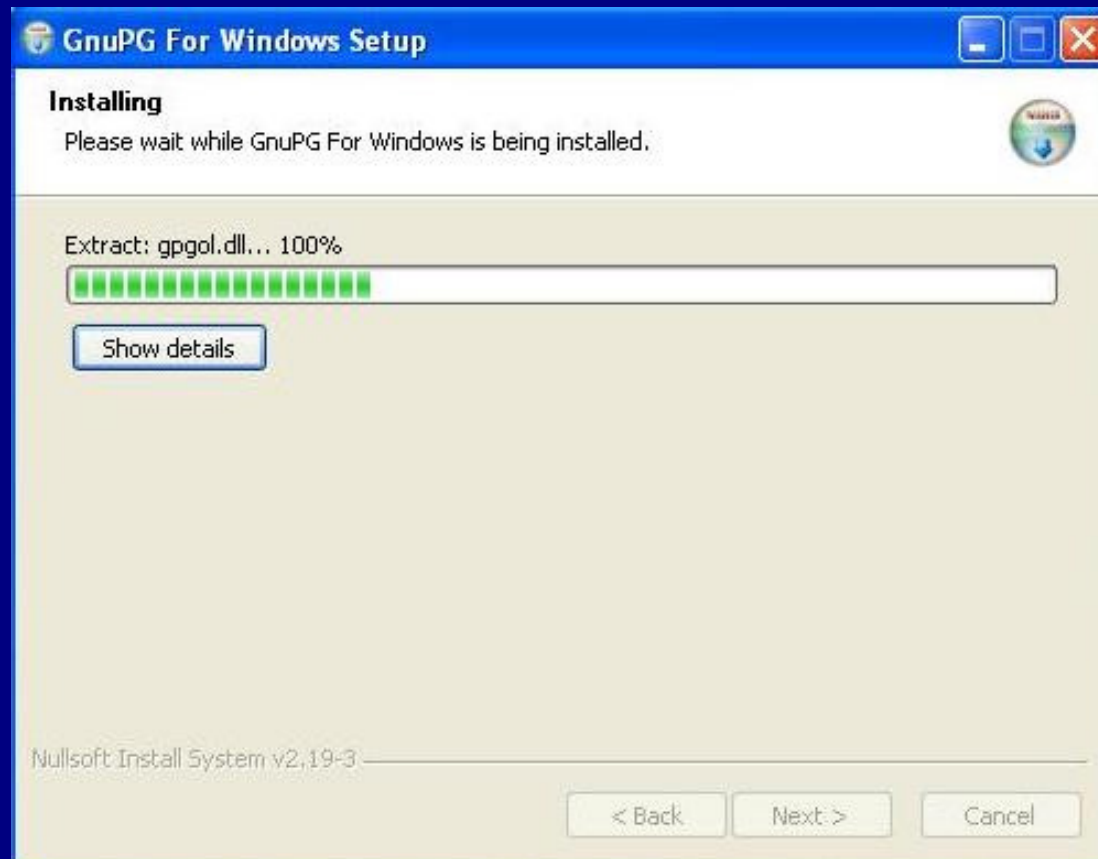
PGP Encryption for Windows

Installation of GPG4Win



PGP Encryption for Windows

Installation of GPG4Win



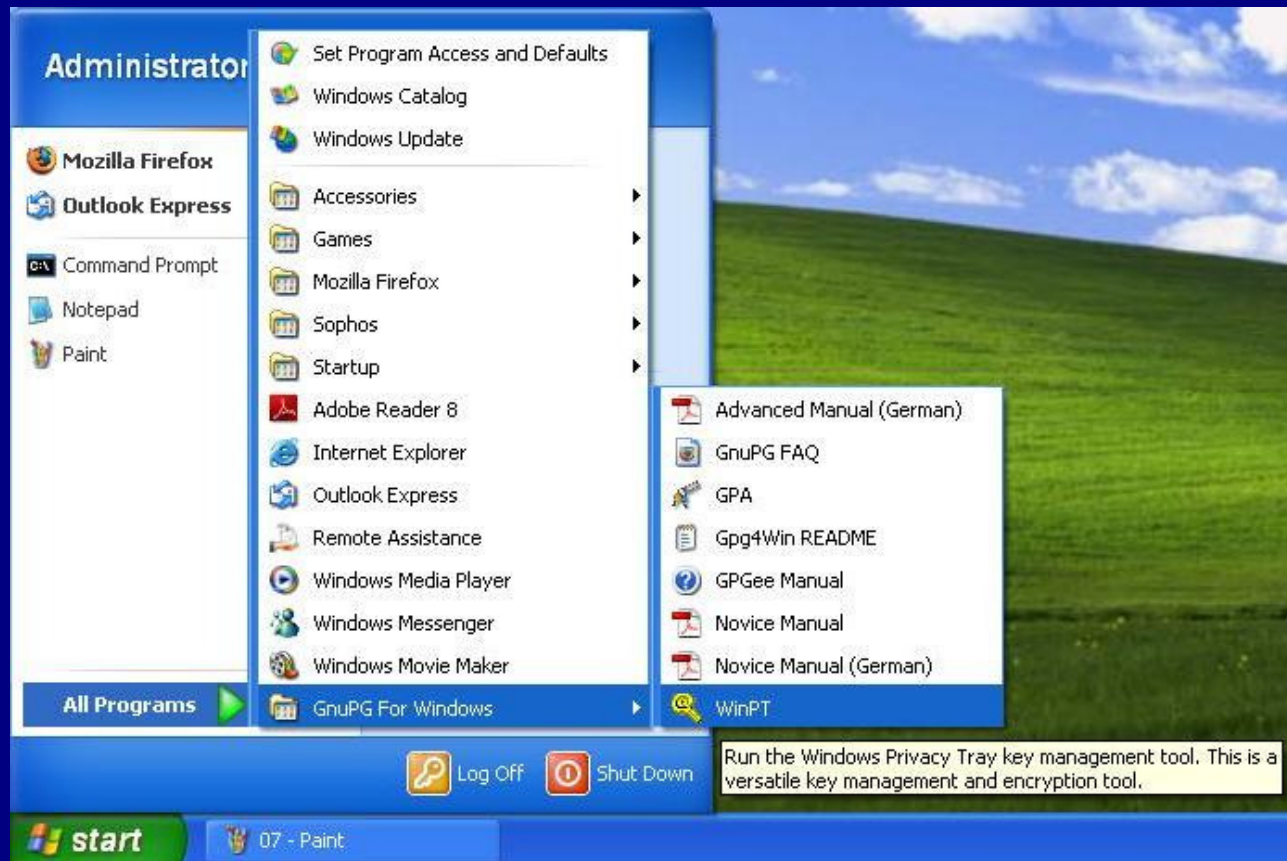
PGP Encryption for Windows

Installation of GPG4Win



PGP Encryption for Windows

Configuration of GPG4Win



PGP Encryption for Windows

Configuration of GPG4Win



PGP Encryption for Windows

Configuration of GPG4Win



Key Generation Wizard

Name and E-Mail Assignment

Every key pair must have a name associated with it. The name and email address let your correspondents know that your public key they are using belongs to us.

Real name:

By associating an email address with your key pair, you will enable WinPT to assist your correspondents in selecting the correct public key when communicating with you.

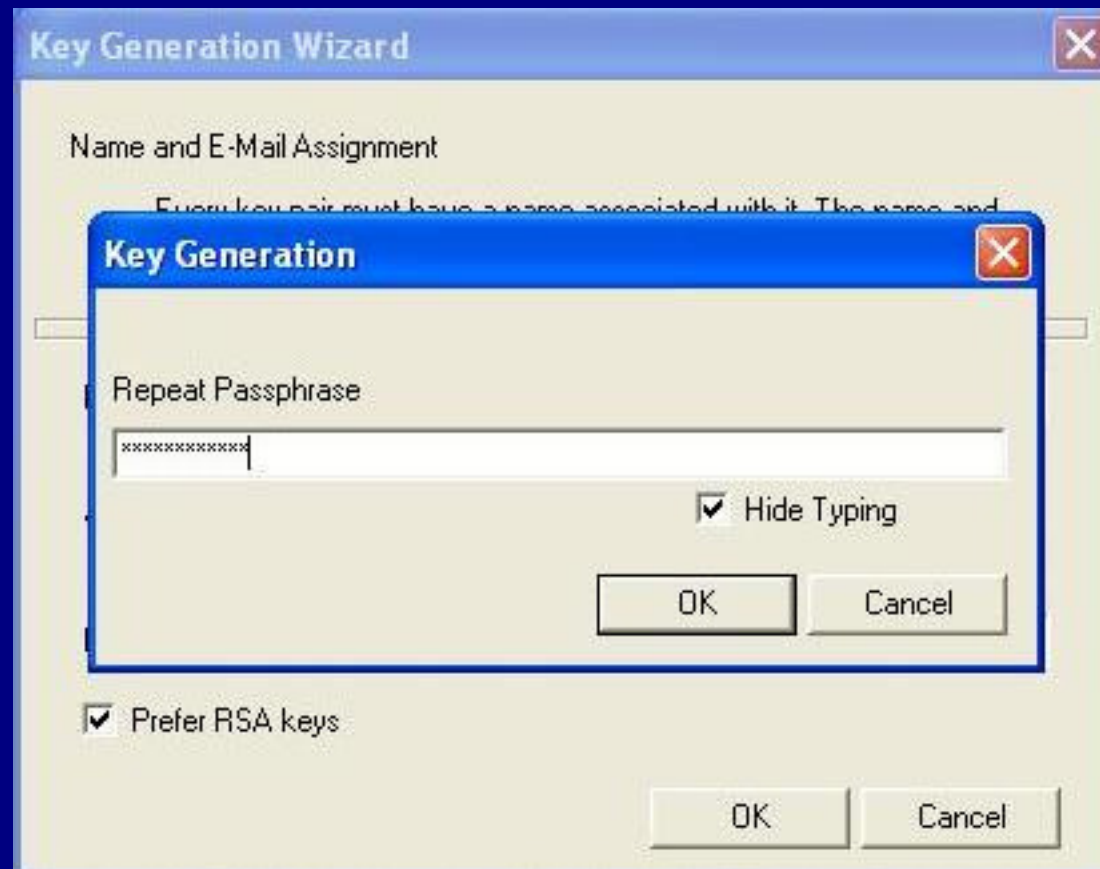
Email address:

☒ Prefer RSA keys

OK Cancel

PGP Encryption for Windows

Configuration of GPG4Win



PGP Encryption for Windows

Configuration of GPG4Win



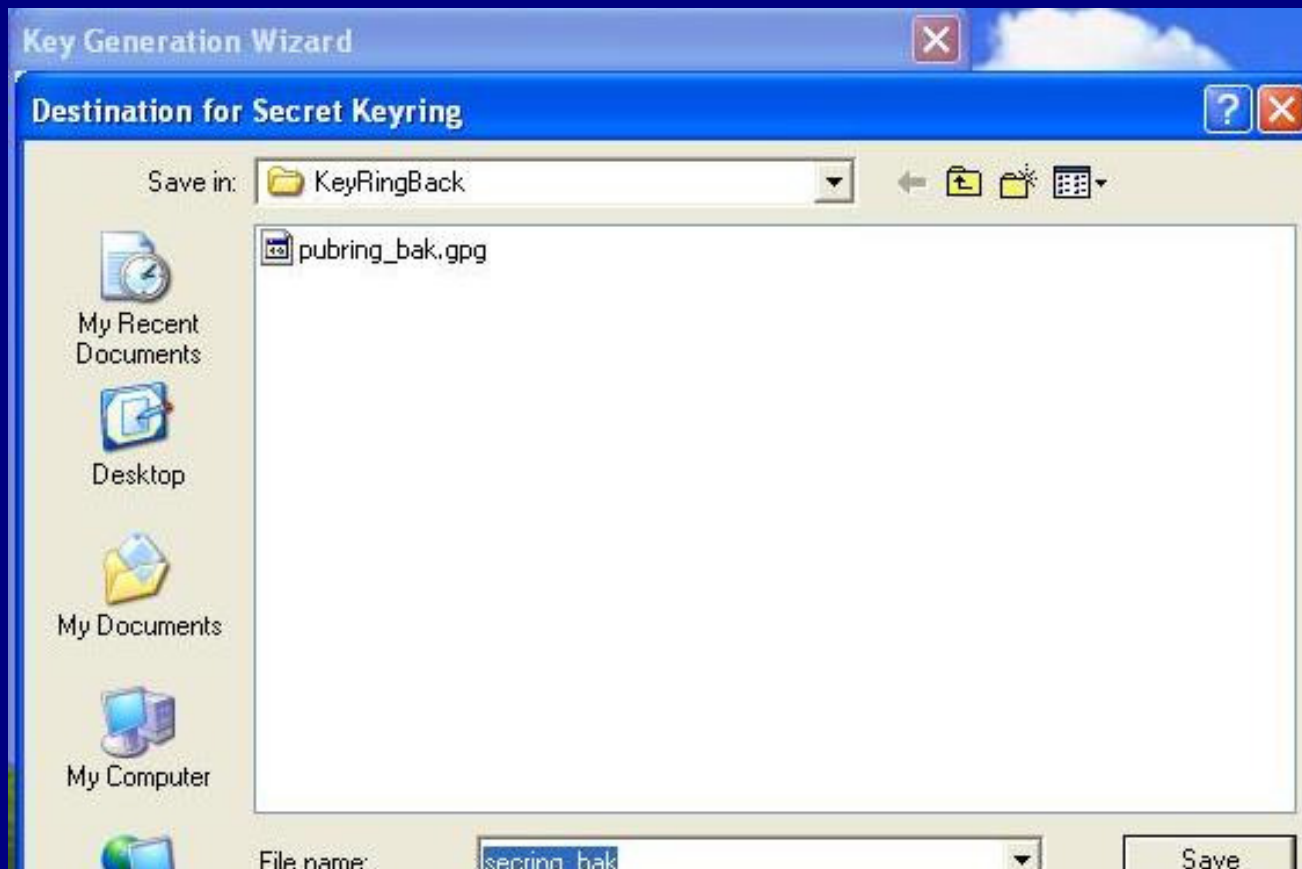
PGP Encryption for Windows

Configuration of GPG4Win



PGP Encryption for Windows

Configuration of GPG4Win



PGP Encryption for Windows

Outline

- Introduction to GPG
- GPG4Win software
- Installation and Configuration of GPG4Win
- **Using GPG4Win**
- References

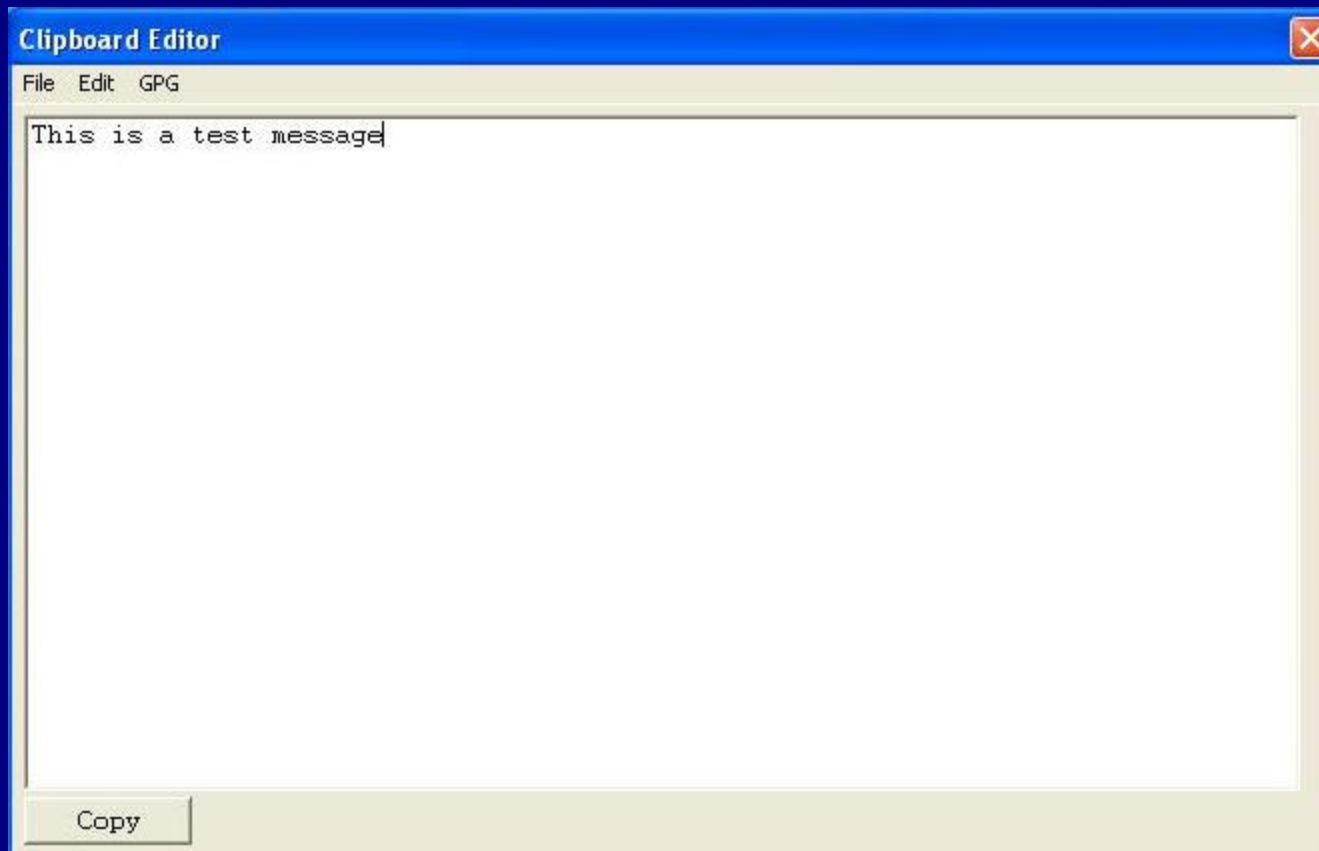
PGP Encryption for Windows

Using GPG4Win



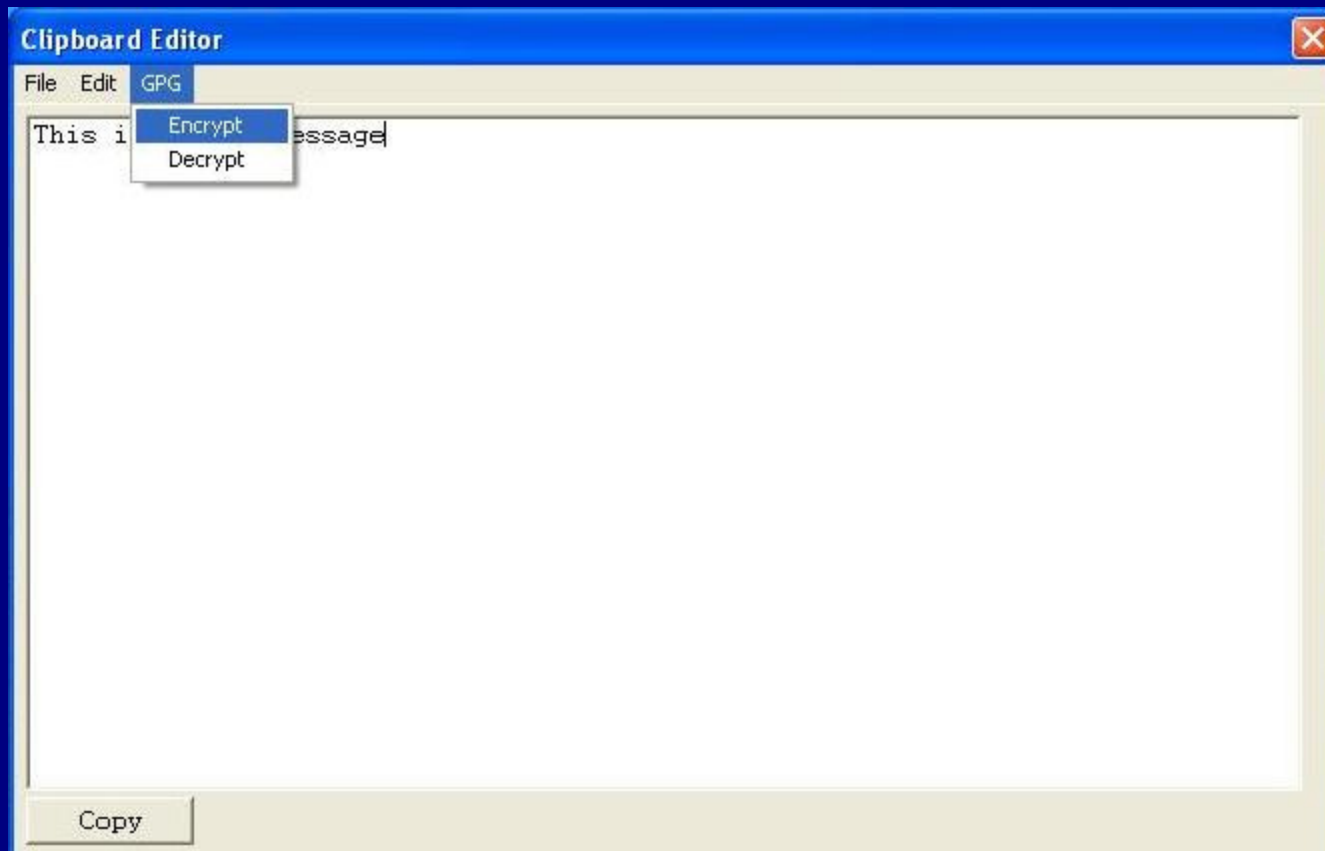
PGP Encryption for Windows

Using GPG4Win



PGP Encryption for Windows

Using GPG4Win

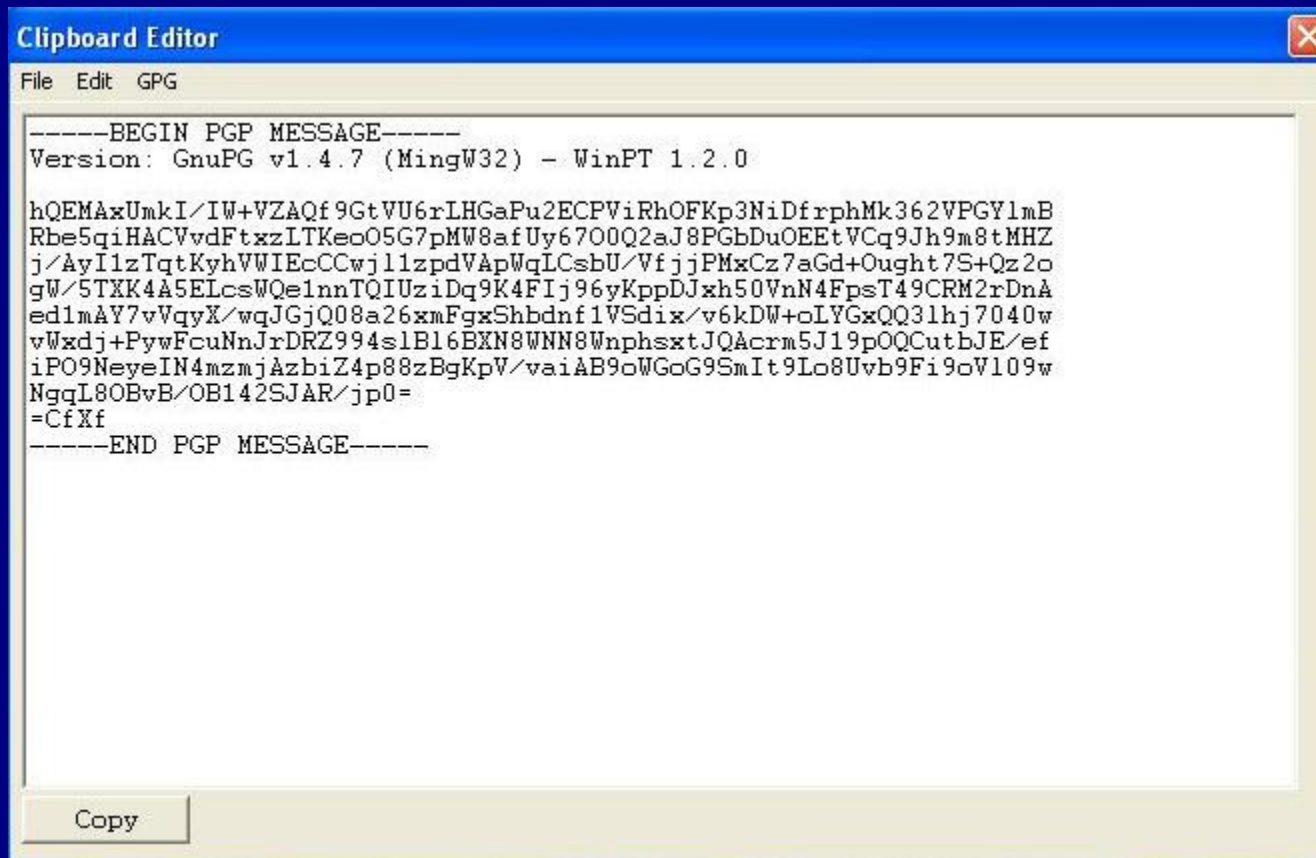


PGP Encryption for Windows Using GPG4Win



PGP Encryption for Windows

Using GPG4Win



The screenshot shows a 'Clipboard Editor' window with a menu bar (File, Edit, GPG) and a text area containing a PGP message. The message is enclosed in '-----BEGIN PGP MESSAGE-----' and '-----END PGP MESSAGE-----' markers. The text area also displays the version 'Version: GnuPG v1.4.7 (MingW32) - WinPT 1.2.0' and a long block of base64-encoded data. A 'Copy' button is visible at the bottom left of the text area.

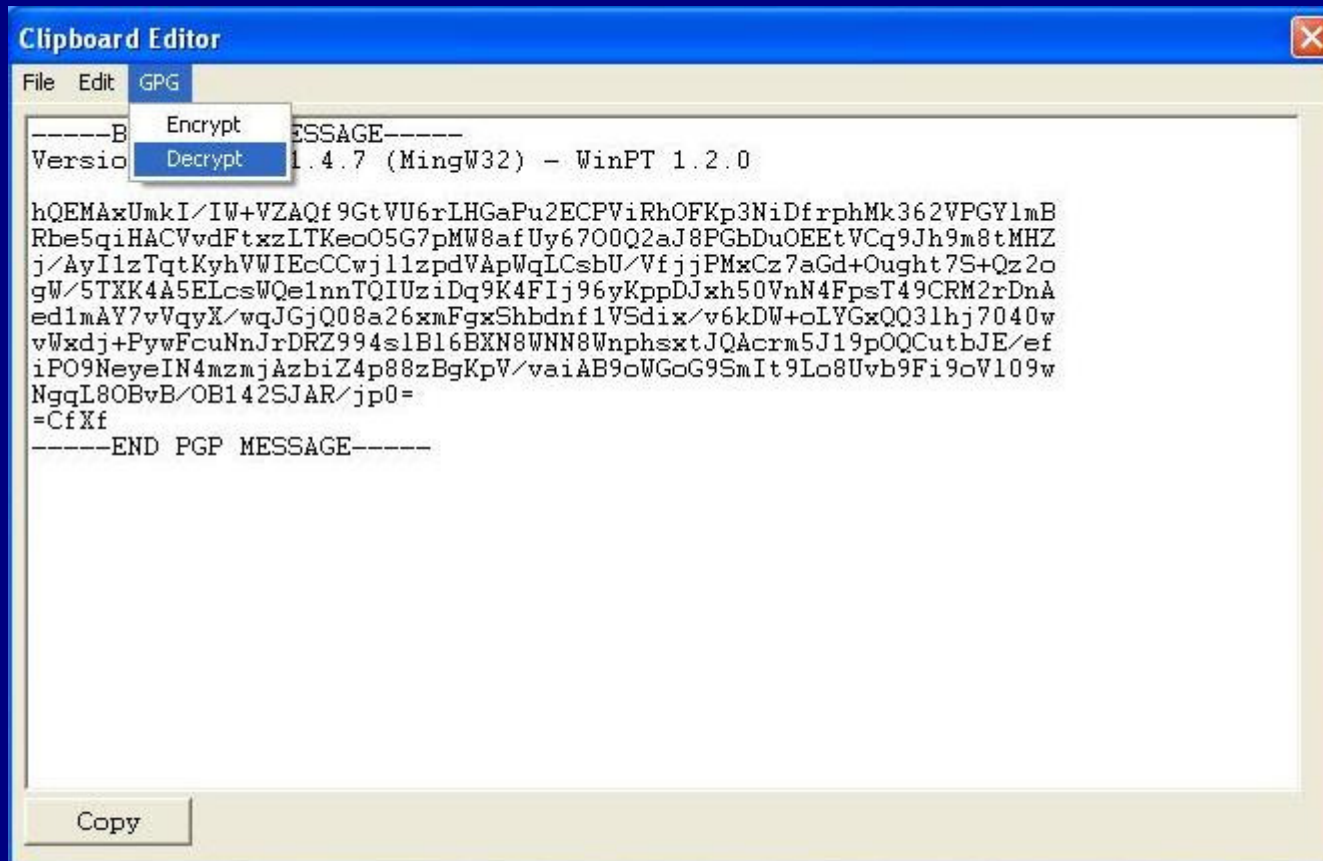
```

-----BEGIN PGP MESSAGE-----
Version: GnuPG v1.4.7 (MingW32) - WinPT 1.2.0

hQEMAxUmkI/IW+VZAQf9GtVU6rLHGAPu2ECPViRhOFKp3NiDfrphMk362VPGYlMB
Rbe5qiHACVvdFtxzLTkeo05G7pMW8afUy6700Q2aJ8PGbDuOEEtVCq9Jh9m8tMHZ
j/AyI1zTqtKyhVWIEcCCwj11zpdVApWqLCsbU/VfjjPMxCz7aGd+Ought7S+Qz2o
gW/5TXK4A5ELcsWQe1nnTQIUziDq9K4FIj96yKppDJxh50VnN4FpsT49CRM2rDnA
ed1mAY7vVqyX/wqJGjQ08a26xmFgxShbdnf1VSdix/v6kDW+oLYGxQQ3lhj7040w
vWxdj+PywFcuNnJrDRZ994slB16BXN8WNN8WnphsxtJQAcrm5J19pOQCubJE/ef
iPO9NeyeIN4mzmjAzbiZ4p88zBgKpV/vaiAB9oWGoG9SmIt9Lo8Uvb9Fi9oVl09w
NgqL80BvB/OB142SJAR/jp0=
=CfXf
-----END PGP MESSAGE-----
  
```

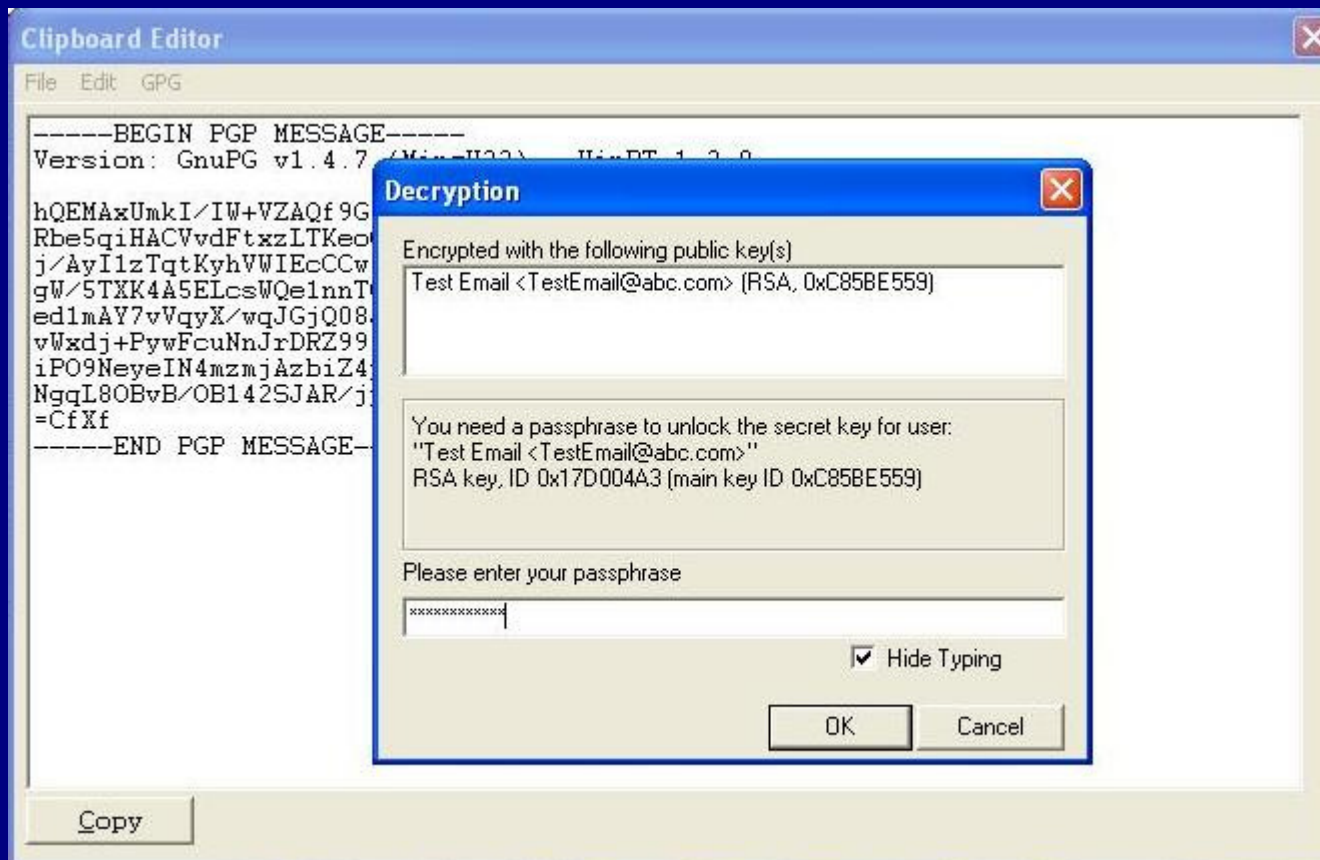
PGP Encryption for Windows

Using GPG4Win



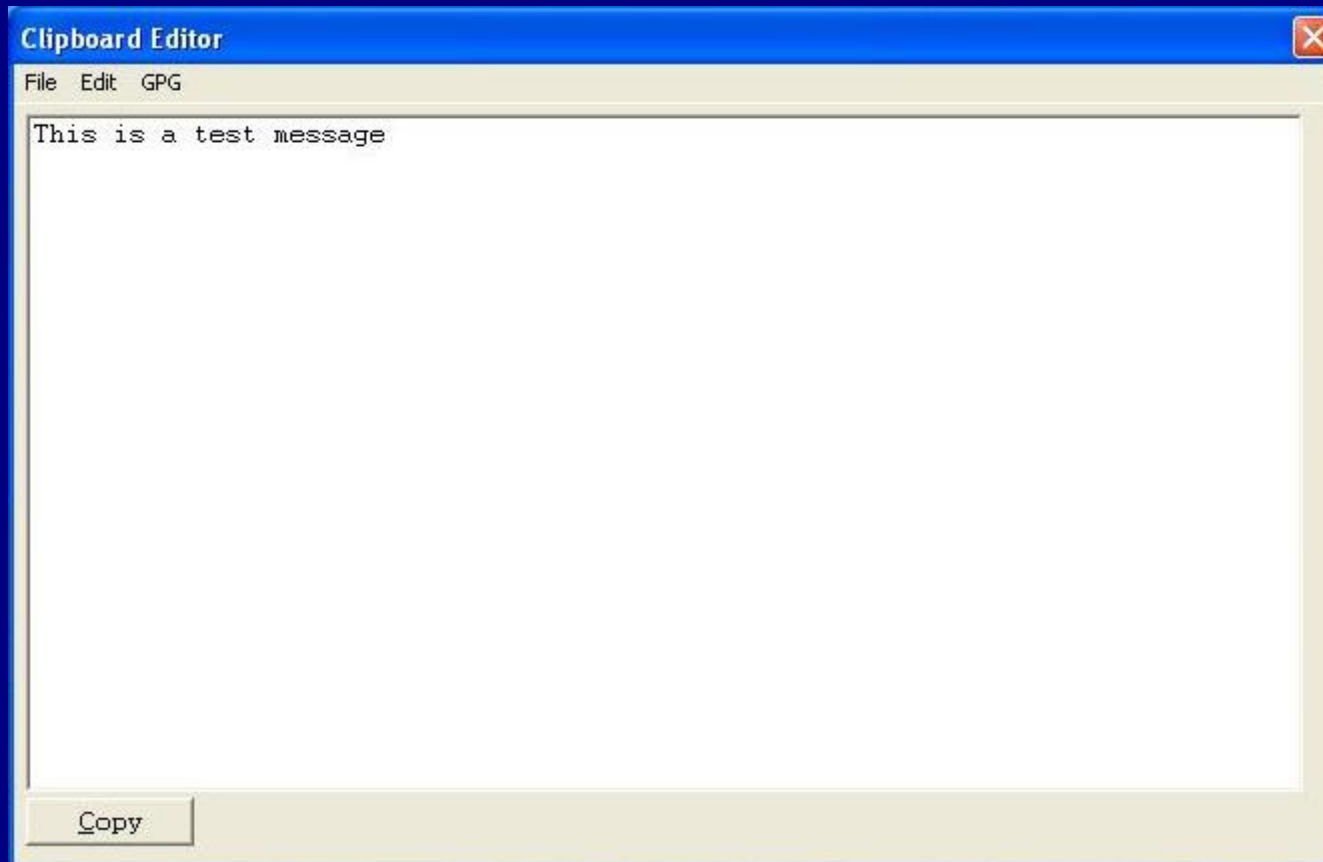
PGP Encryption for Windows

Using GPG4Win



PGP Encryption for Windows

Using GPG4Win



PGP Encryption for Windows

Outline

- Introduction to GPG
- GPG4Win software
- Installation and Configuration of GPG4Win
- Using GPG4Win
- References

PGP Encryption for Windows

References

1. <http://www.gnupg.org>
2. <http://www.gpg4win.org>