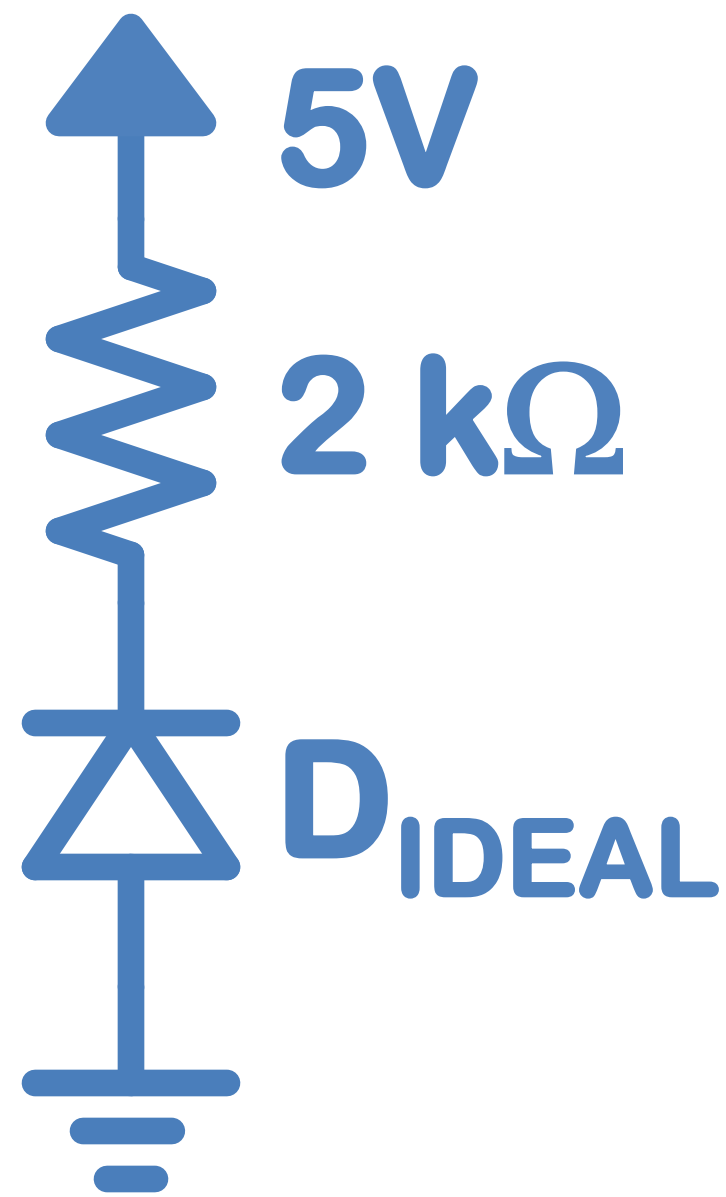


Problem 1.

Find V_D and I_D for each circuit.



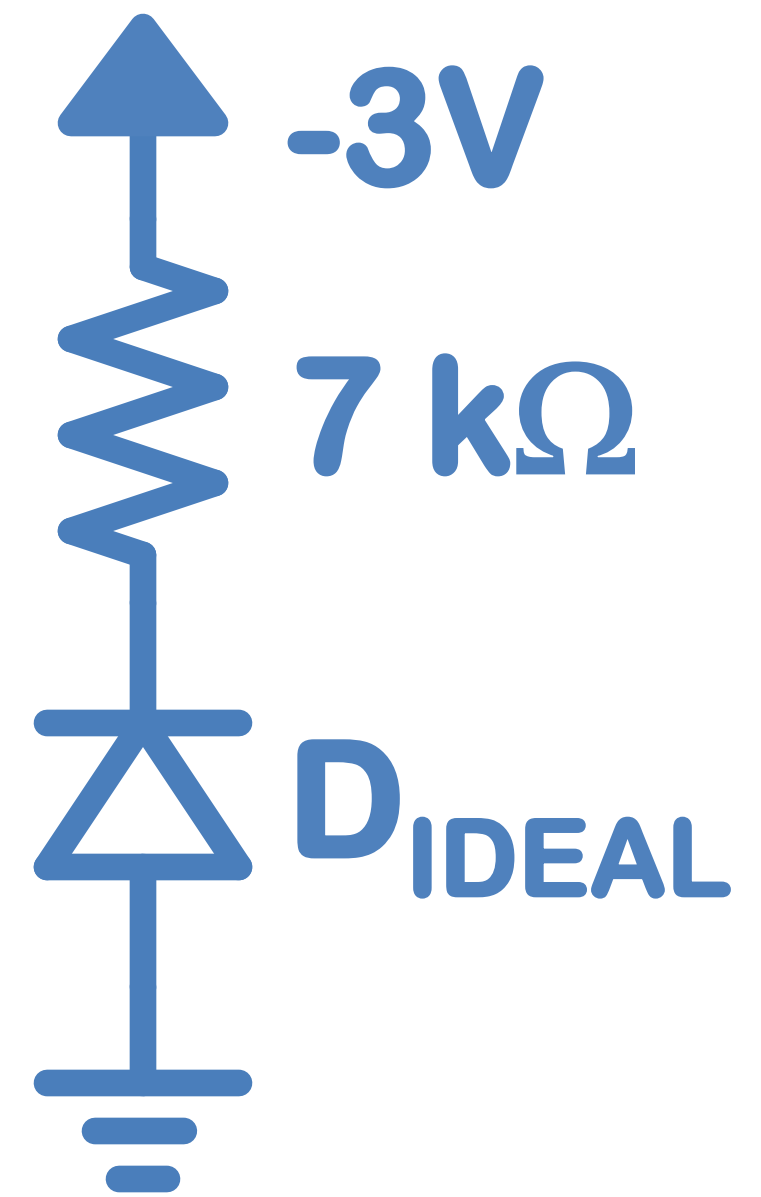
(A)



(B)



(C)



(D)

Problem 1.

Find V_D and I_D for each circuit.



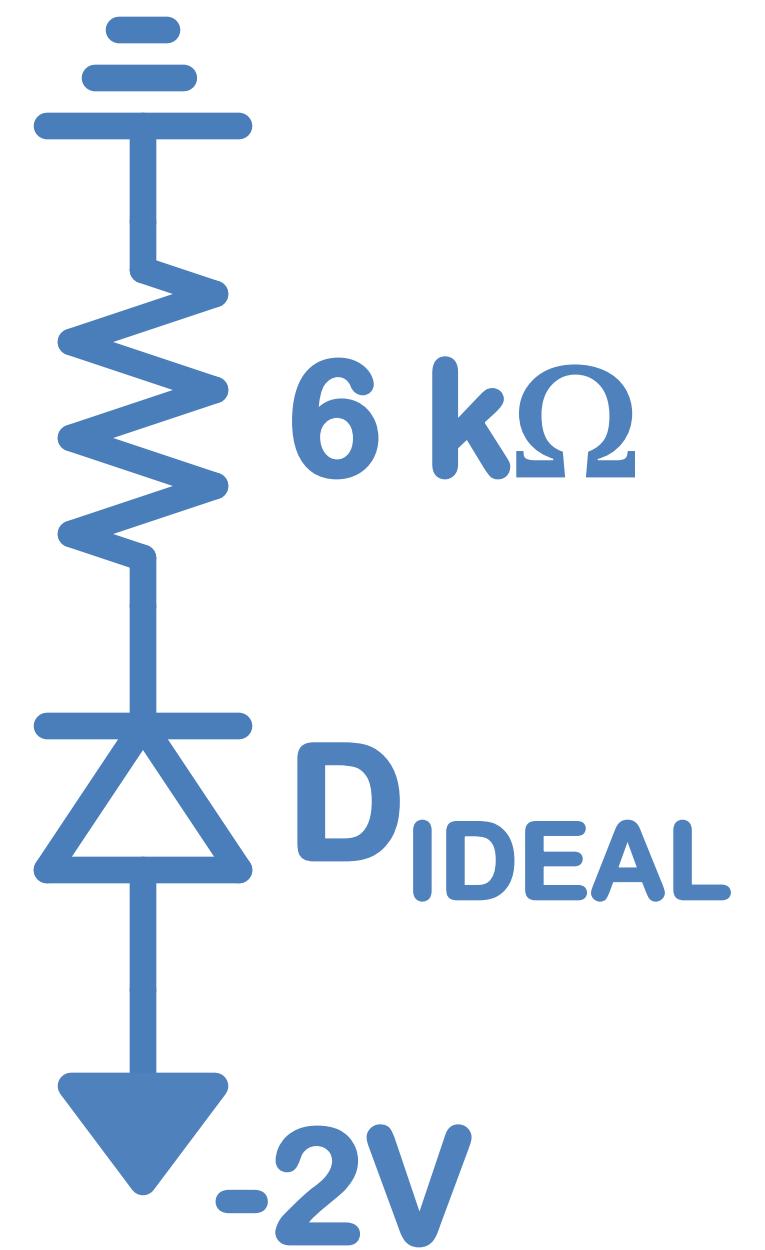
(E)



(F)

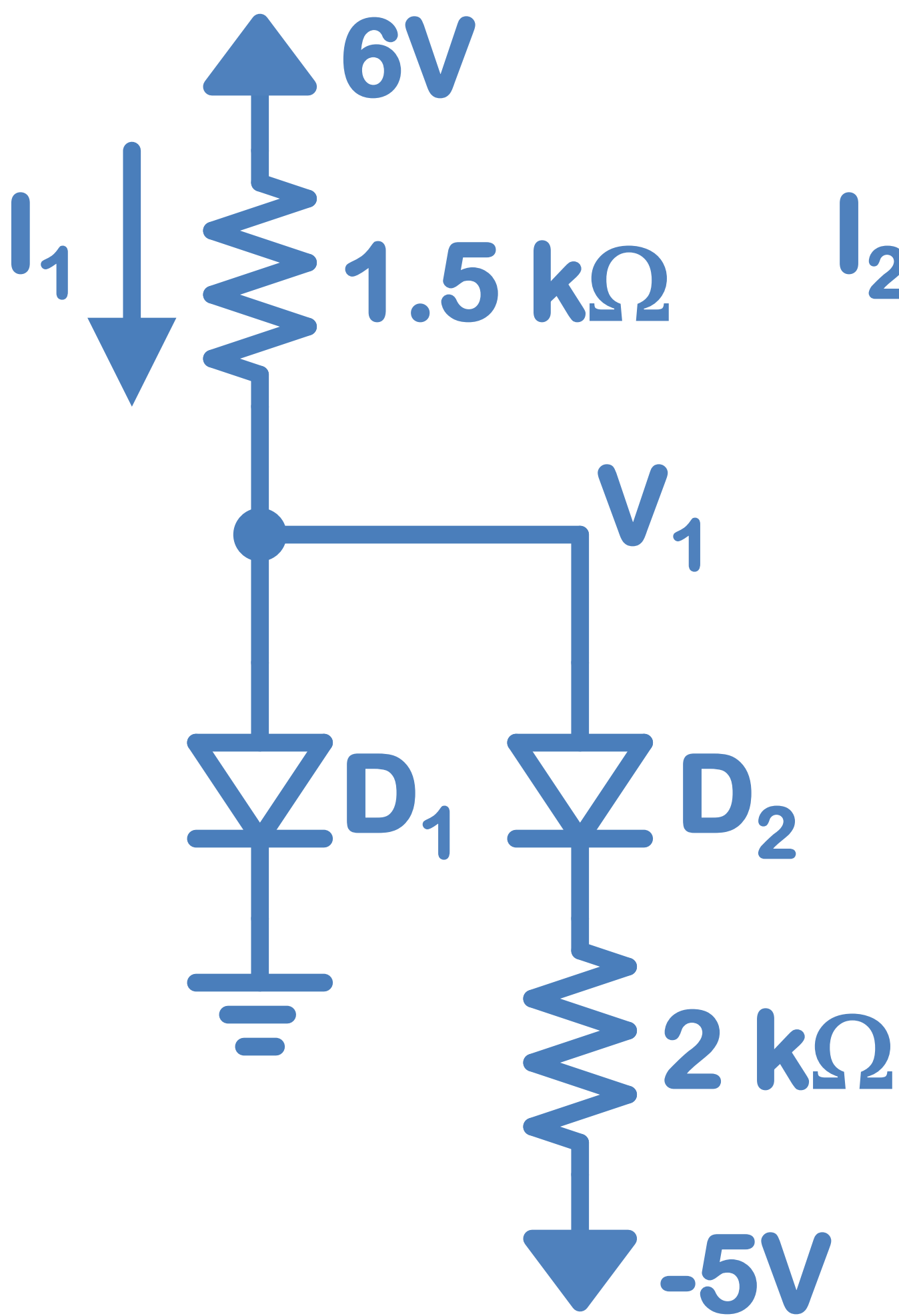


(G)

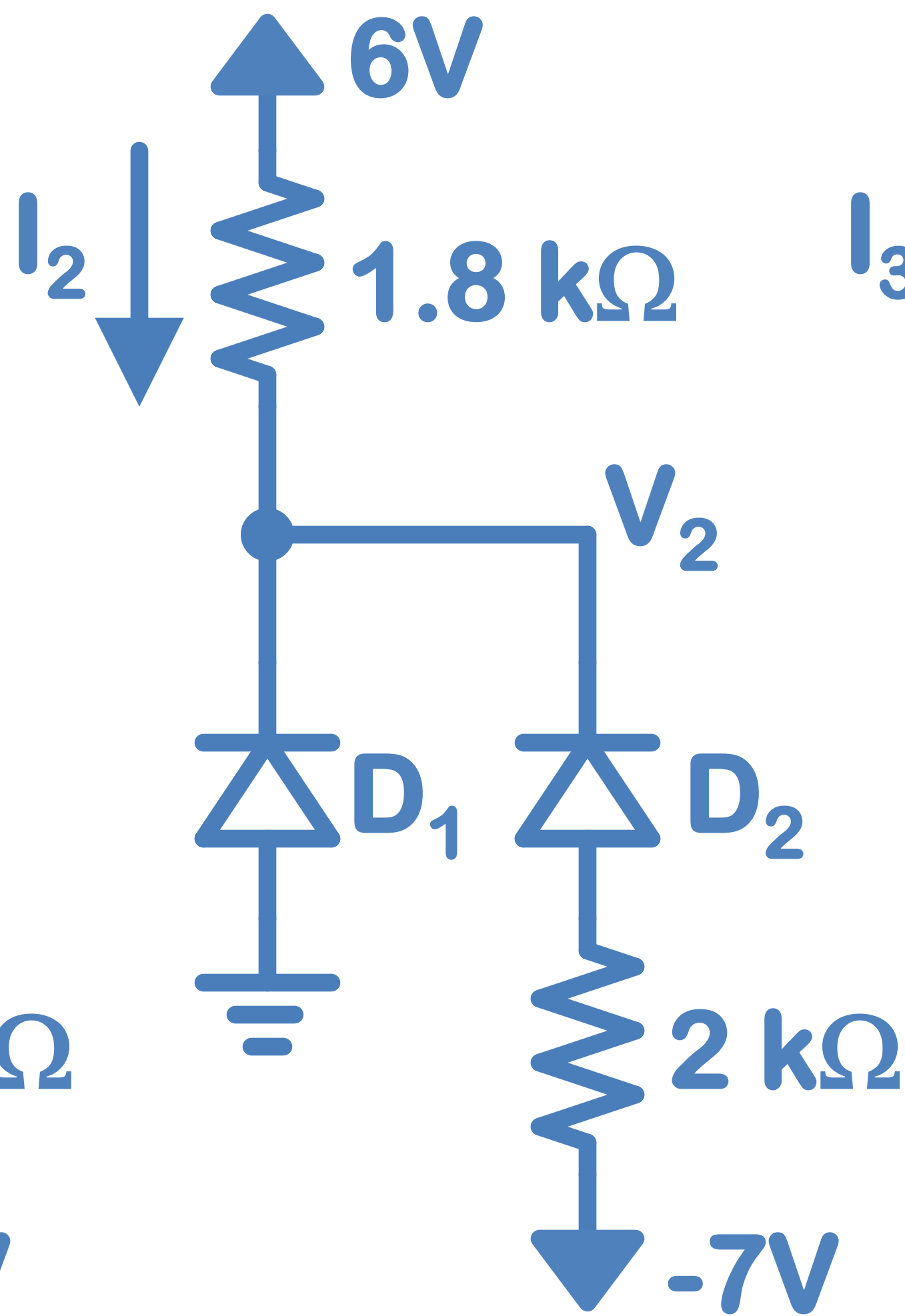


(H)

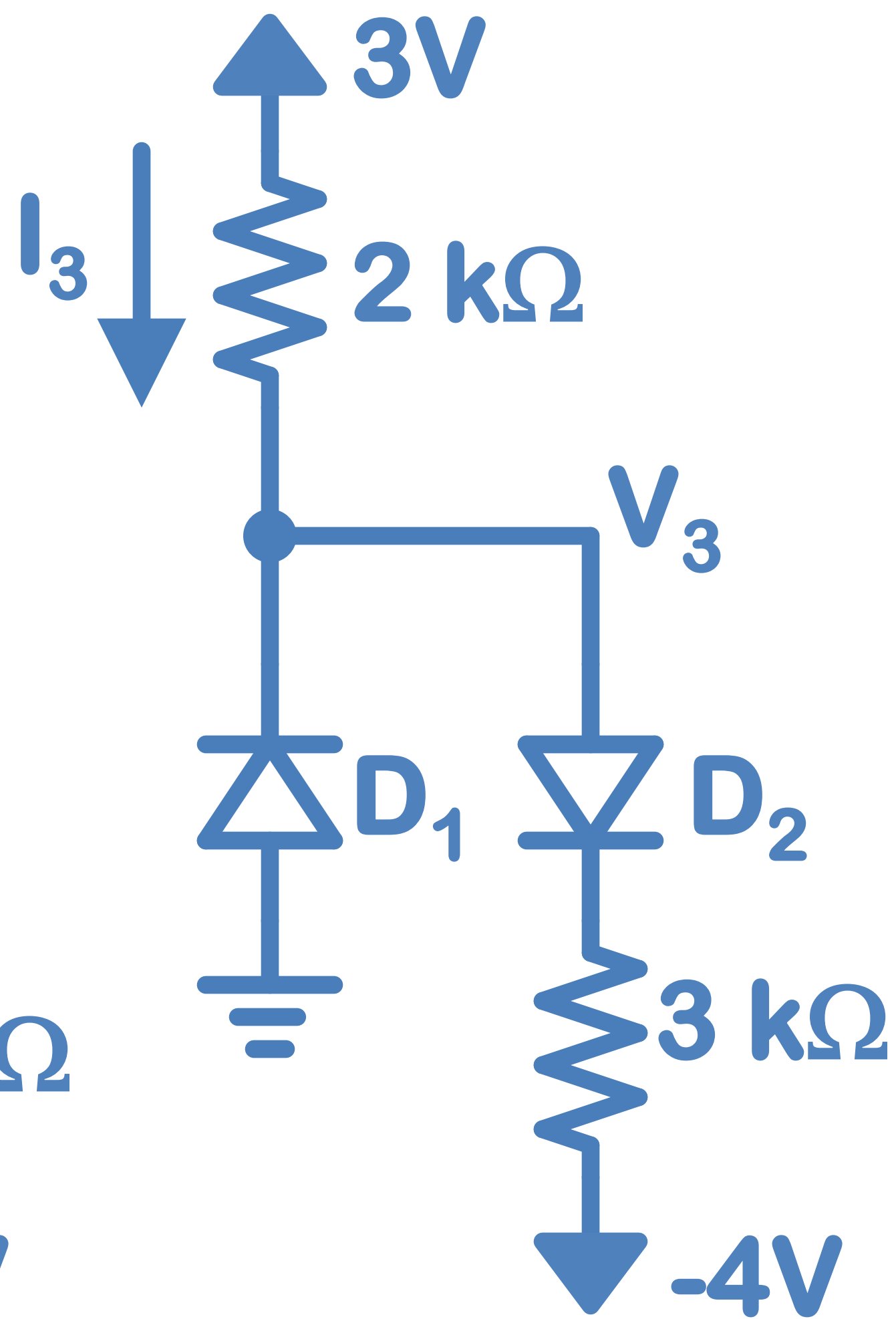
Problem 2. Find $V_{1,2,3}$ and $I_{1,2,3}$ in the circuits below. All diodes are ideal.



(A)

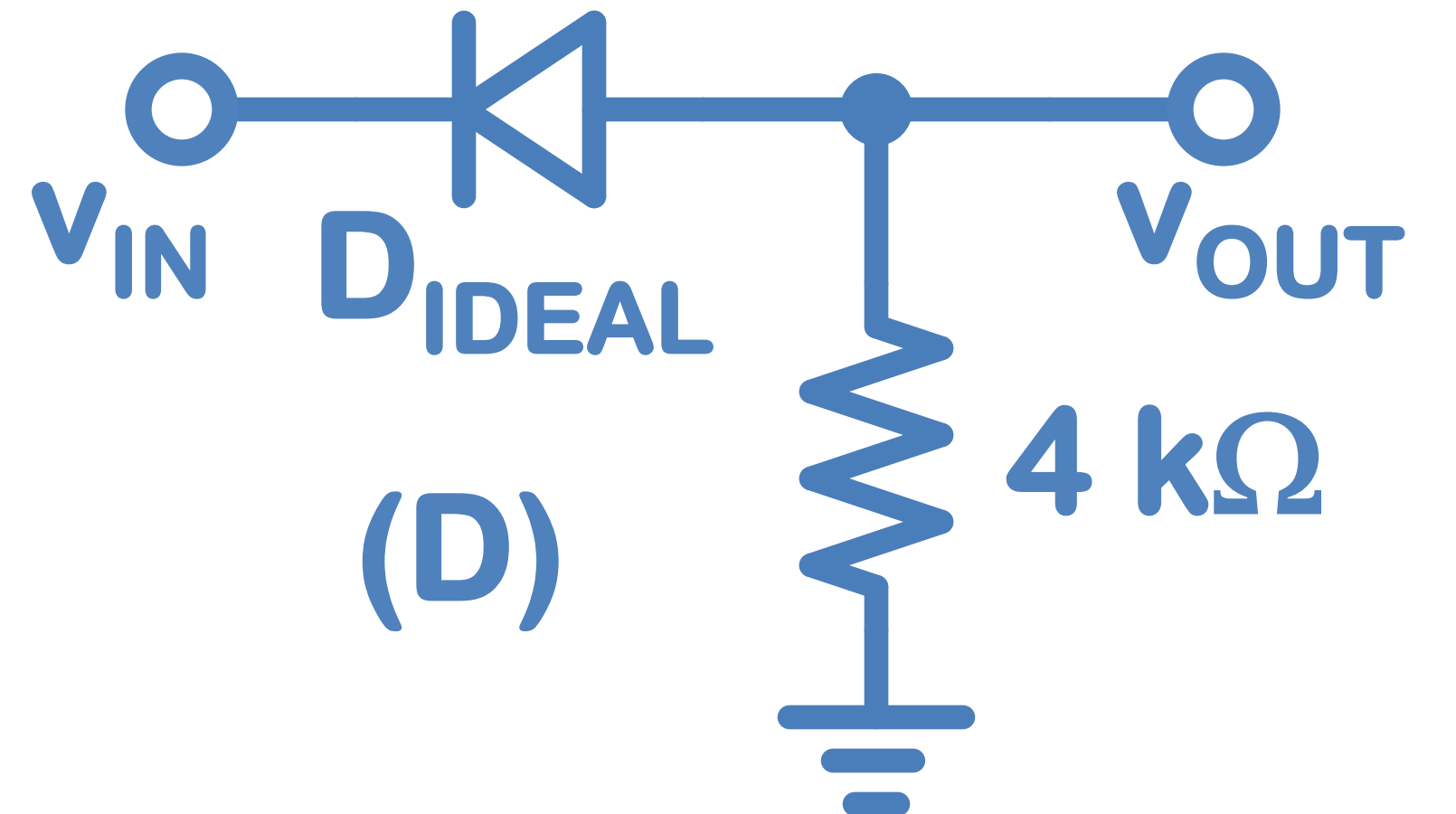
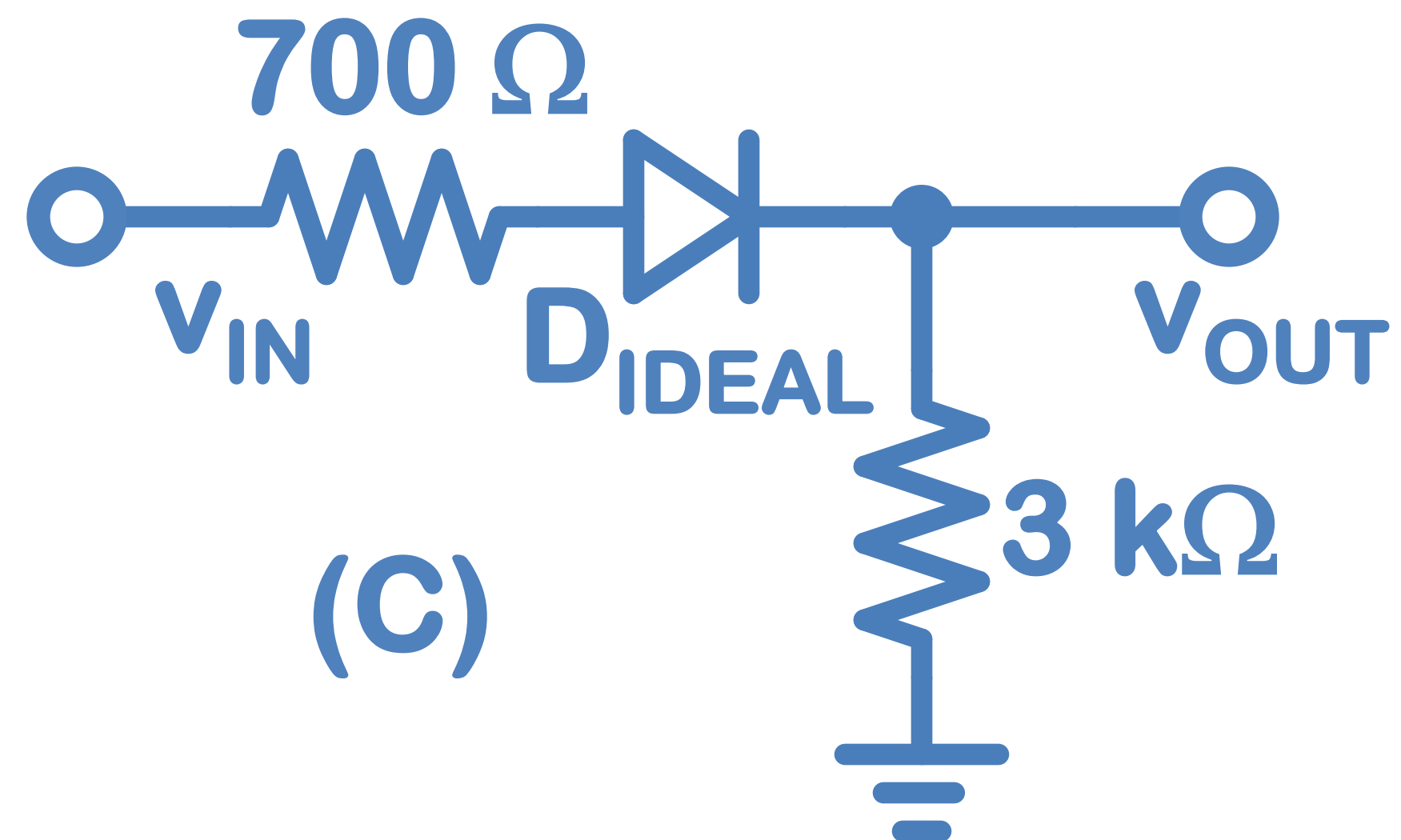
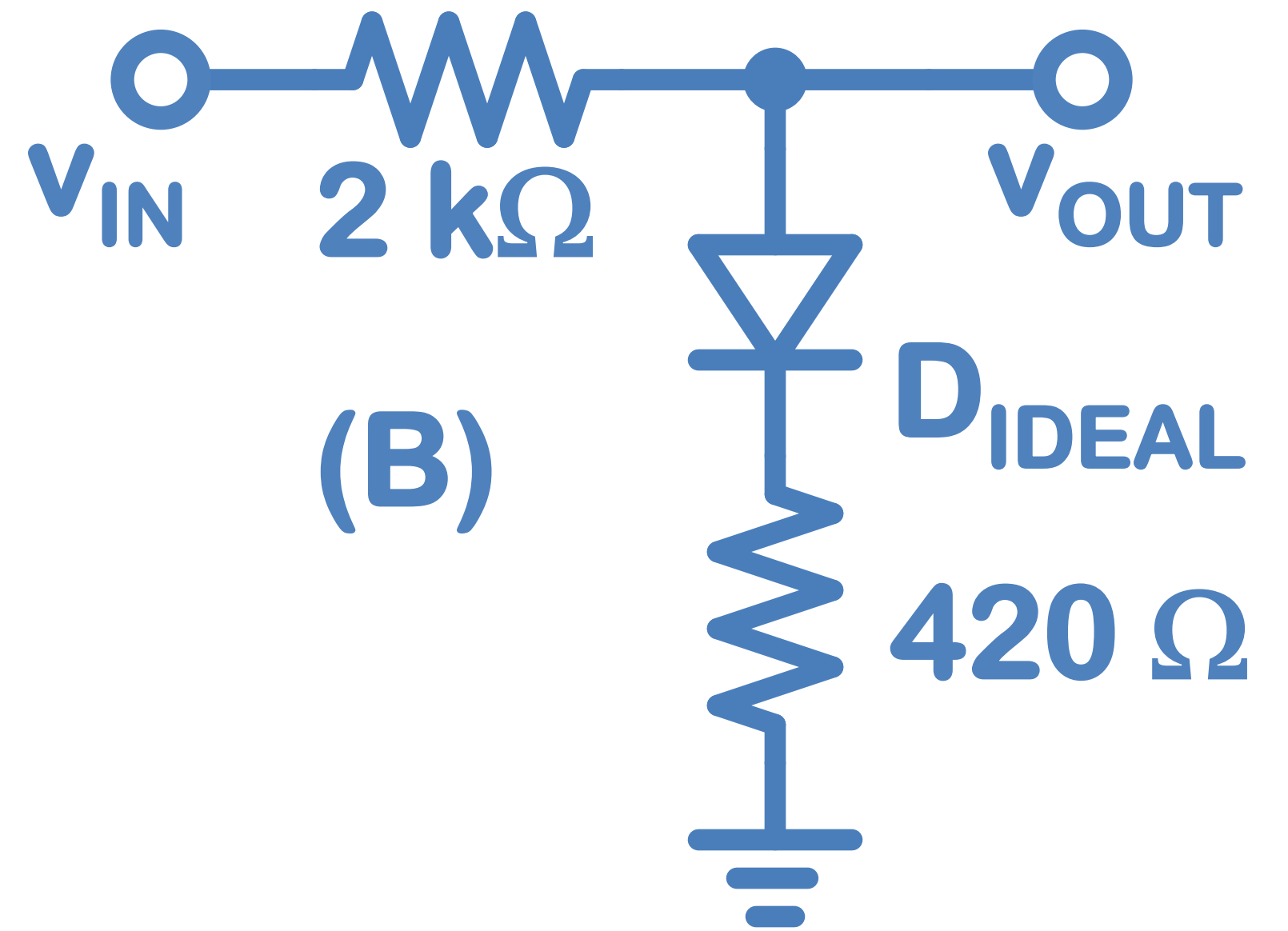
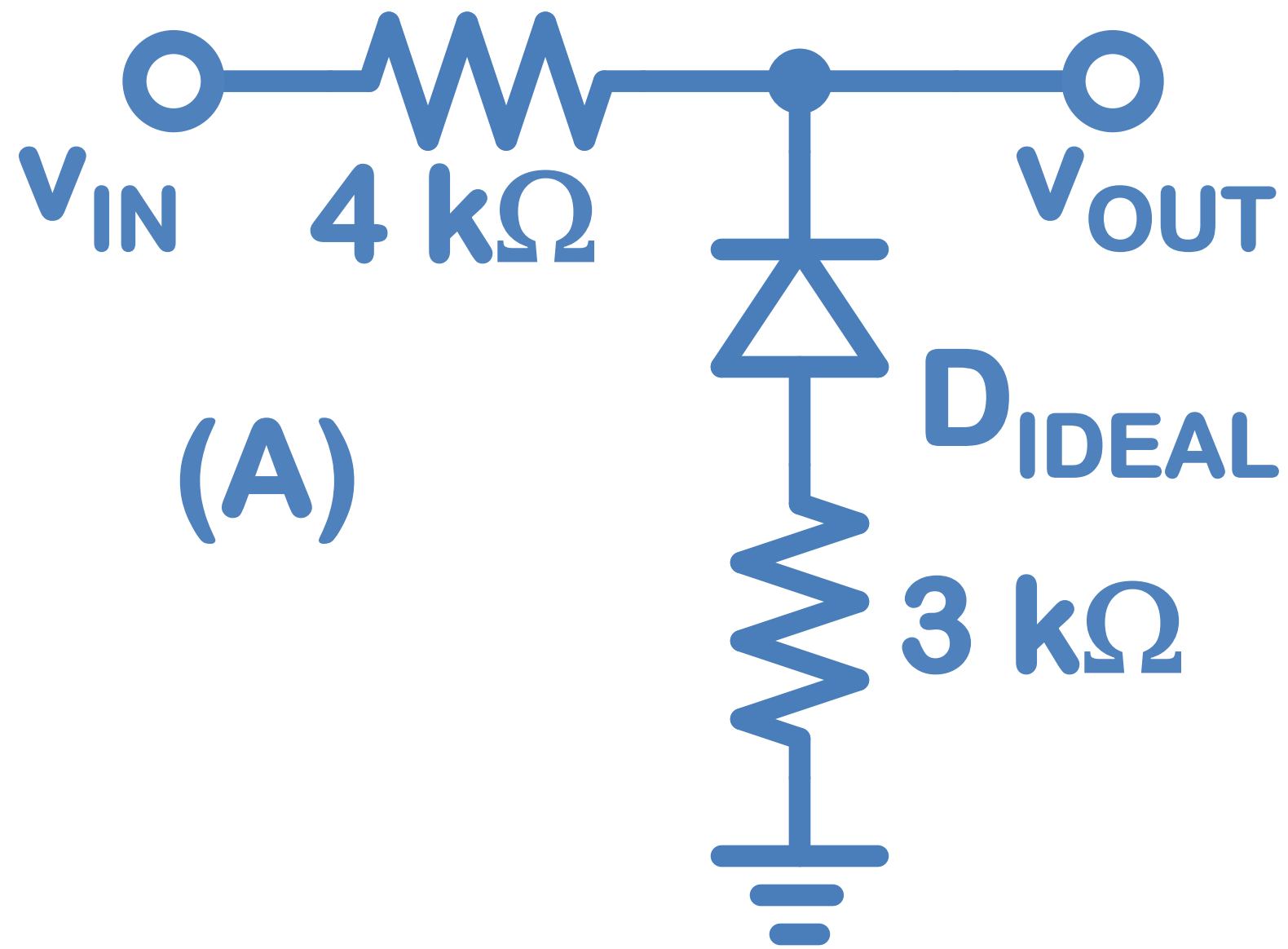


(B)



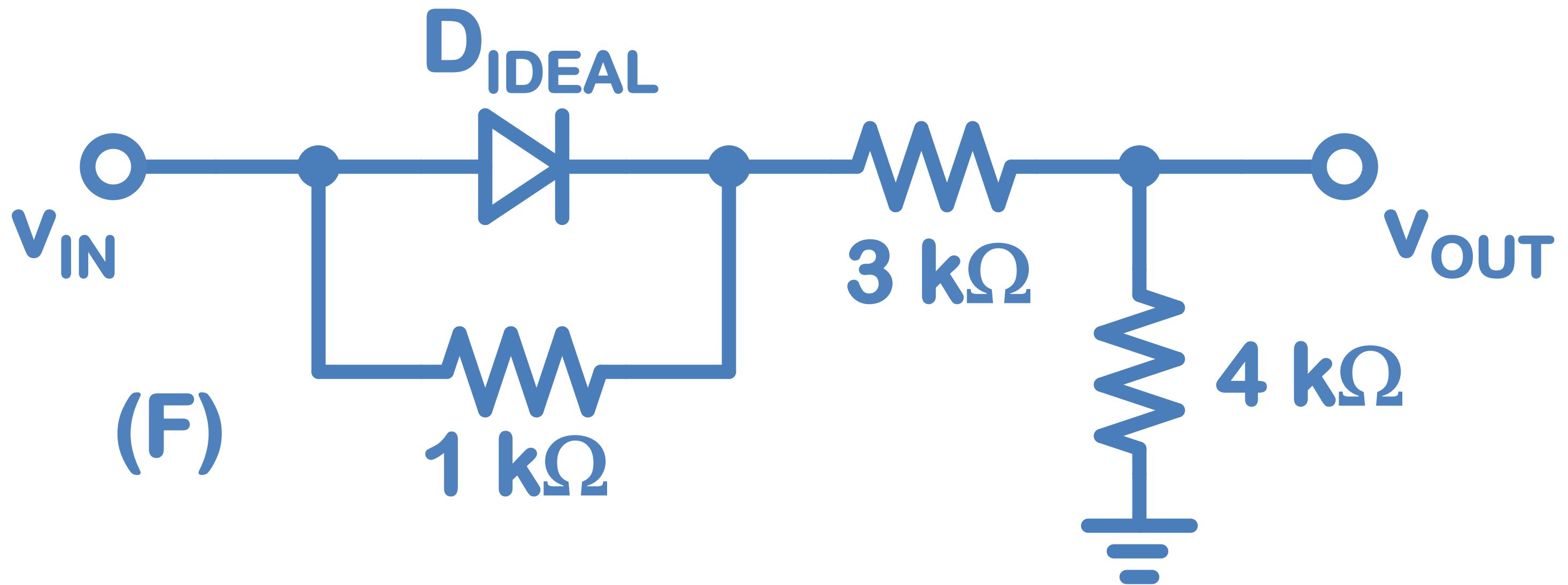
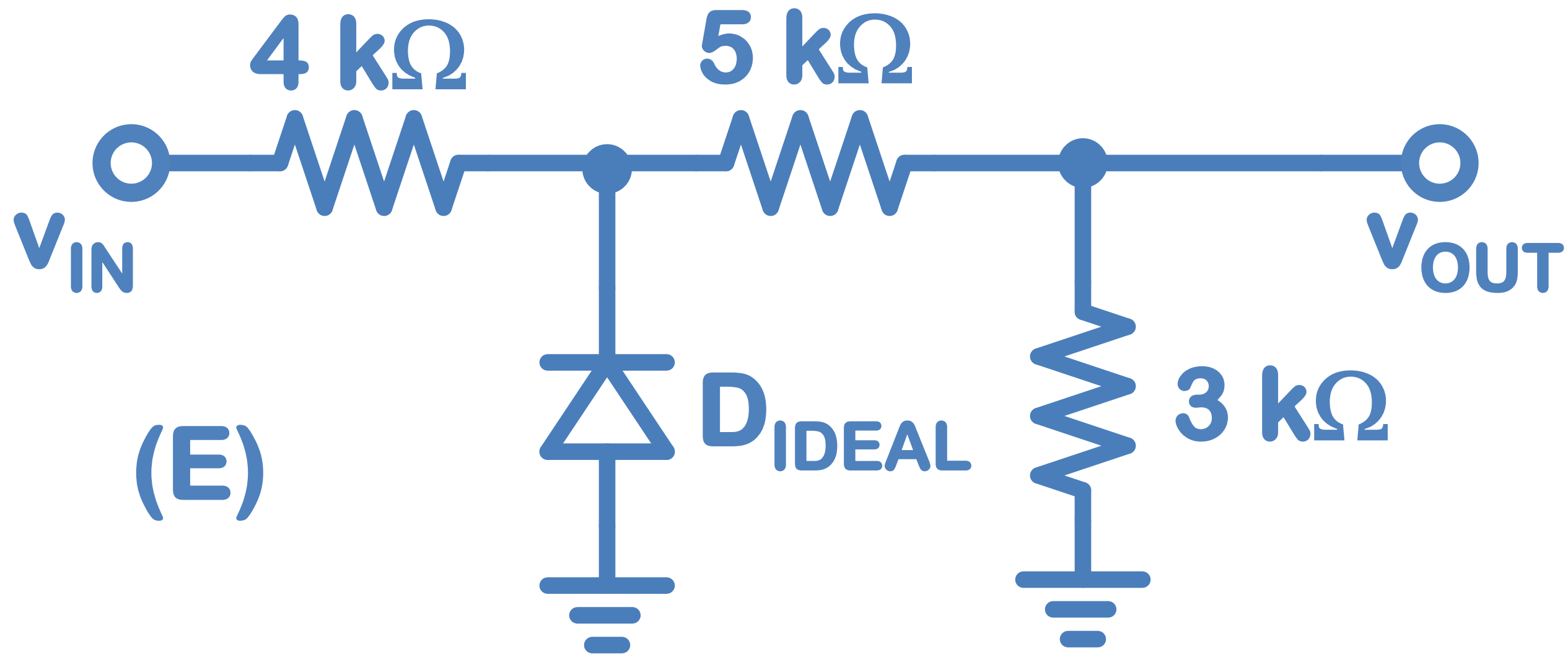
(C)

Problem 3. Find the equations and plot $v_{OUT}(v_{IN})$ for each circuit.



Problem 3.

a) Find the equation and plot $v_{OUT}(v_{IN})$ for each circuit.



Problem 4.

a) Find the equation and plot $v_{OUT}(v_{IN})$ for the circuit.

